

HUTCHINSON TOWNSHIP

Each township has six files containing six sections in each, and one file containing all 36 sections.

Hutchinson01to06.pdf
Hutchinson07to12.pdf
Hutchinson13to18.pdf
Hutchinson19to24.pdf
Hutchinson25to30.pdf
Hutchinson31to36.pdf
HutchinsonAll36.pdf

The points are listed starting with the point above the SE corner and continuing in a counter-clockwise rotation around the section. This normally begins with the East point, Northeast, then North, but may also include Witness Corners, and/or Meander Corners.

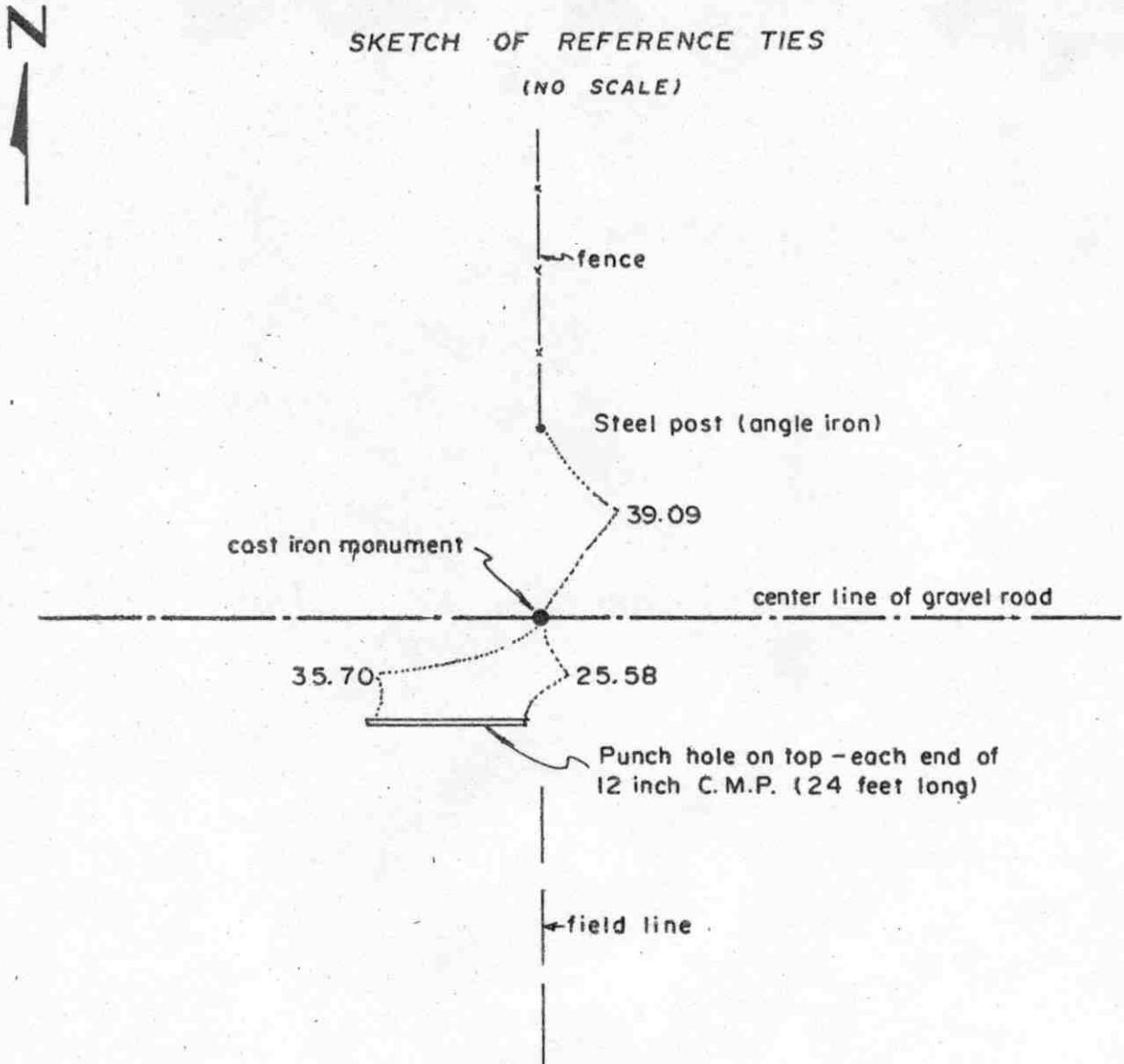
Definitions

Witness Corner: A witness corner “stands in” when the true corner cannot be monumented or occupied because of difficult terrain or obstruction of the corner sight. The witness corner must be on the section line and is usually 5 or 10 chains away from the true corner.

Meander Corner: The intersection of a township, range, or section line and the banks of a navigable stream or meandering body of water.

EAST QUARTER corner, Section 19, Township 117 North, Range 29 West

Certificate of Location of Government Corner



Statement of evidence relative to this corner location on sheet 2

I hereby certify that this document was prepared by me or under my direct supervision.

Willard Pellinen

Willard Pellinen
McLeod County Surveyor
License No. 9626

Date 2/10/89

OFFICE OF THE COUNTY RECORDER
MCLEOD COUNTY, MINNESOTA.

I hereby certify that this document was filed in this office at 9 o'clock A.M. on the 15th day of Feb 1989.

Carmin Potlie, County Recorder
By _____, Deputy

Document No. 226954

EAST QUARTER corner, Section 19, Township 117 North, Range 29 West

Certificate of Location of Government Corner

This corner was established by A.H.Runyon of the Government Land Office in May, 1856. He set a post and had reference ties to 2 bearing trees.

1921 survey by E.L.Higgins shows an iron post at this corner on the center line of the road.

In May 1969, the Minnesota State Highway Department found a $1\frac{1}{4}$ inch square iron monument on the center of road running east-west, fences north and south, down 1 foot below the road surface.

In 1970, McCombs Knutson Associates, Dickman Knutson, County Surveyor, set a McLeod County cast iron monument in place of the monument found by the State Highway Department.

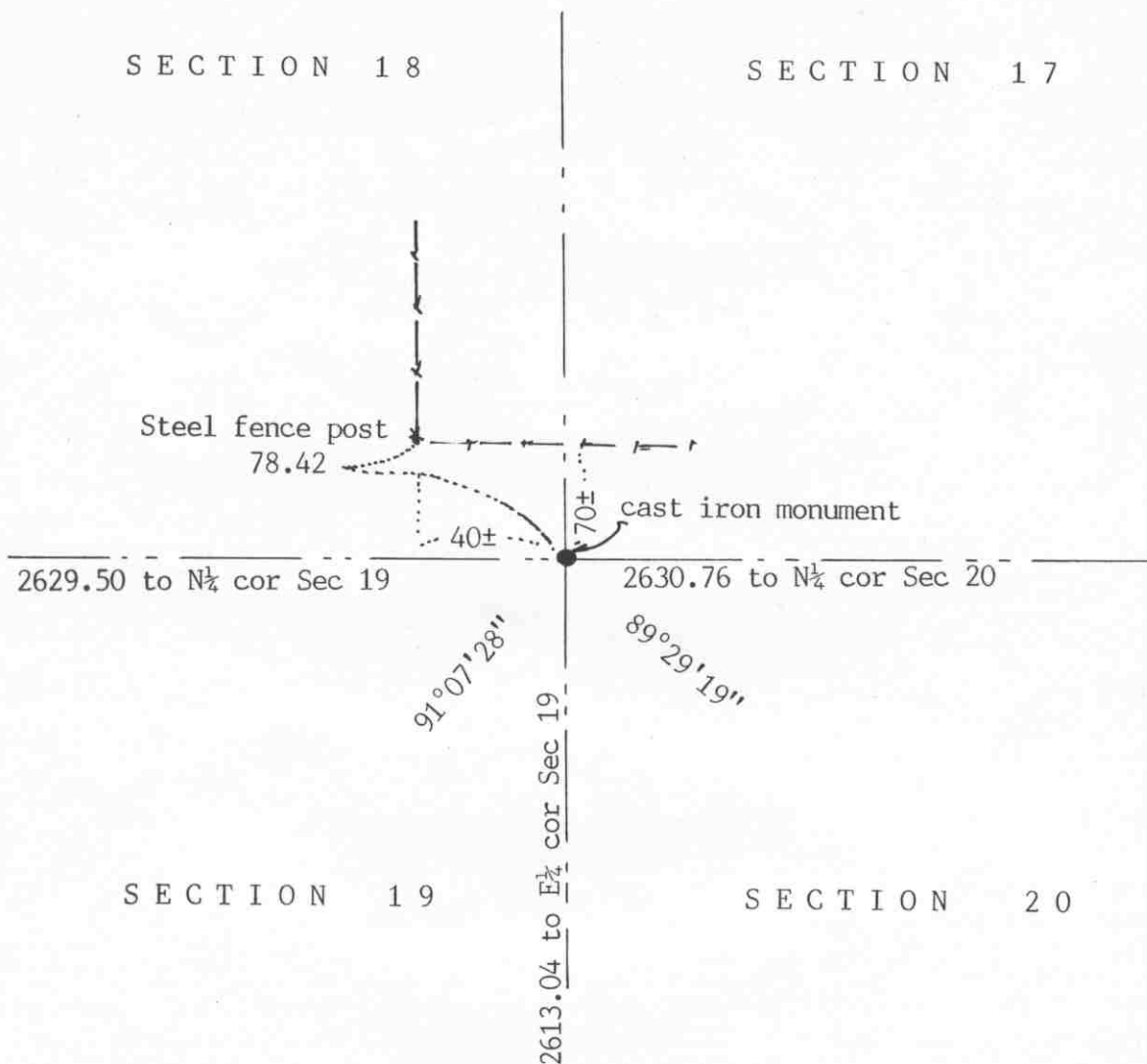
On April 20, 1988, we found the monument damaged, top of monument was broken off. The base of the monument was still in good condition. We took new reference ties and set a railroad spike over the base of the monument, down 3 inches below the road surface.

The monument shown in 1920 survey and later the cast iron monument set by Dickman Knutson has perpetuated the true location of the east quarter corner of Section 19.

NORTHEAST corner, Section 19, Township 117 North, Range 29 West

Certificate of Location of Government Corner

SKETCH OF REFERENCE TIES (NO SCALE)



Statement of evidence relative to this corner location on sheet 2

I hereby certify that this document was prepared by me or under my direct supervision.

Willard Pellinen

Willard Pellinen
McLeod County Surveyor
License No. 9626

Date April 1, 1991

OFFICE OF THE COUNTY RECORDER
MCLEOD COUNTY, MINNESOTA.

I hereby certify that this document was filed in this office at 9 o'clock A.M. on the 19th day of April, 1991.

Carmen Ostlie, County Recorder

By _____, Deputy

Document No. 238419

NORTHEAST

corner, Section 19, Township 117 North, Range 29 West**Certificate of Location of Government Corner**

May, 1856. A.H.Runyon of the General Land Office set a post at the corner and marked 2 oaks and 2 aspens for bearing trees.

June, 1970. McCombs Knutson Associates (Dickman Knutson, county surveyor) searched around the fence intersection, fences north and east, but found nothing. Mr. Guy Field and Mr. Theo Hemmann, the only land owners adjoining this corner (Mr. Hemmann owns to the northwest, southwest and southeast of the corner and Mr. Hemmann owns to the northeast. They both say the corner was in the field southeast of the fence corner. Mr. Jorgenson, former owner in Section 20 also had told Mr. Field the corner was in the field. He had seen a post in a mound and pointed out the location to Mr. Field. Mr. Field and Mr. Hemmann pointed out this location to Knutson. This location is about 40 feet east and 70 feet south of the fence corner. Knutson set a McLeod County cast iron monument. This falls within a few feet of "lost" location for the corner.

April 1988. We found the monument in good condition in the field.

MAY 4, 1990. We again found the monument in good condition.

There being no evidence to the contrary, we accept the monument set by Knutson as being the correct location of the section corner.

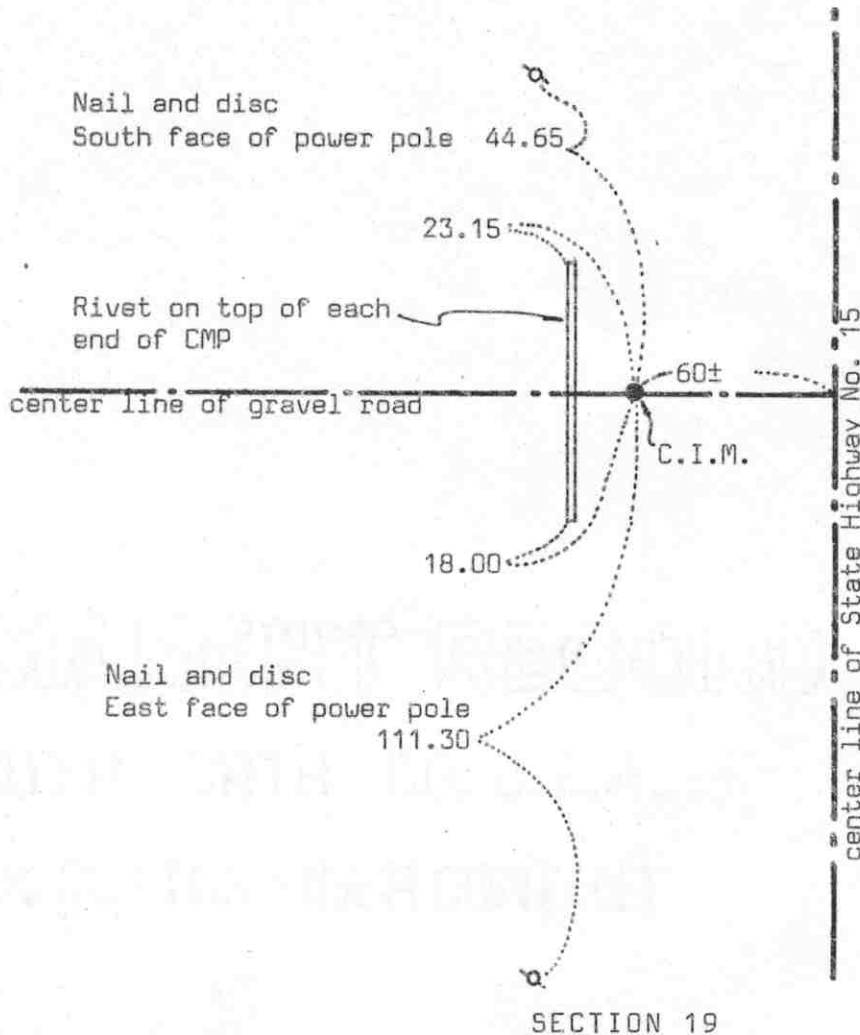
NORTH QUARTER corner, Section 19, Township 117 North, Range 29 West

Certificate of Location of Government Corner

SKETCH OF REFERENCE TIES

(NO SCALE)

SECTION 18



Statement of evidence relative to this corner location on sheet 2

I hereby certify that this document
was prepared by me or under my
direct supervision.

Willard Pellinen
Willard Pellinen
McLeod County Surveyor
License No. 9626

Date June 18, 1990

OFFICE OF THE COUNTY RECORDER
MCLEOD COUNTY, MINNESOTA.

I hereby certify that this document was filed in this
office at 9 o'clock A.M. on the 9th day
of July, 1990.

Carmen Holie, County Recorder
By _____, Deputy

Document No. 234308

NORTH QUARTER corner, Section 19, Township 117 North, Range 29 West

Certificate of Location of Government Corner

May, 1856. A.H.Runyon of the General Land Office established this corner. He set a post and had reference ties to 2 aspens.

April 19, 1921. Survey field notes by E.L.Higgins, surveyor, shows he found a stone at the quarter corner and he measured 2905 feet to the northwest corner.

1969. Minnesota Highway Department found a pointed field stone down 26 inches below the road surface at the location shown on the highway right of way map. They placed a 3/4 inch by 24 inch iron pin inside a 12 inch by 2 inch iron pipe above the high point of the stone.

November 15, 1973. McCombs Knutson Associates (Dickman Knutson, county surveyor) placed a McLeod County cast iron monument in place of the 3/4 inch iron pin, over the 2 inch iron pipe, and took reference ties.

March 9, 1987. We measured 2907.10 feet to the northwest corner of Section 19, compared with 2905 feet by Higgins in 1921.

April 7, 1989. We found the monument in good condition and the reference ties good.

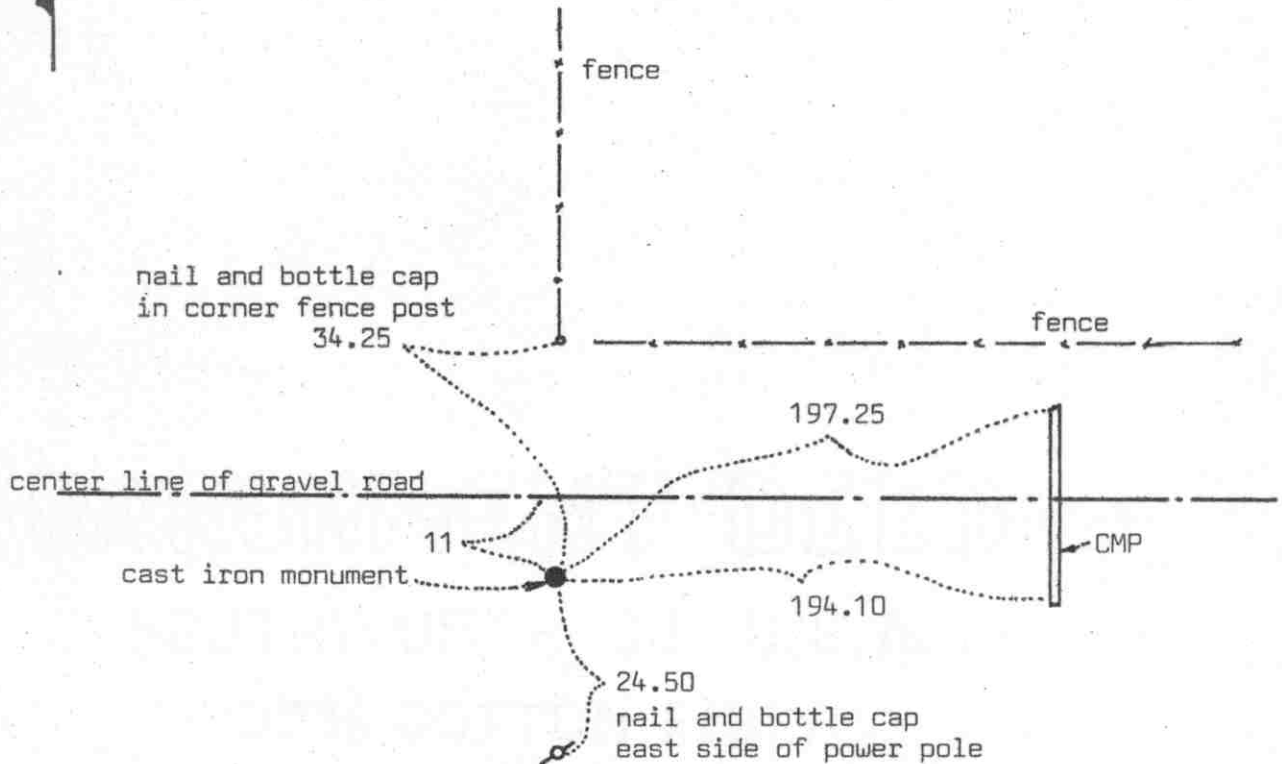
We accept the stone bound by the Minnesota Highway Department, the iron pin set by the highway department, and the cast iron monument set by Knutson as having perpetuated the correct location of the quarter corner.

NORTHEAST corner, Section 24, Township 117 North, Range 30 West

Certificate of Location of Government Corner



SKETCH OF REFERENCE TIES (NO SCALE)



Statement of evidence relative to this corner location on sheet 2

I hereby certify that this document was prepared by me or under my direct supervision.

Willard Pellinen
Willard Pellinen
McLeod County Surveyor
License No. 9626

Date 3/1/89

OFFICE OF THE COUNTY RECORDER
MCLEOD COUNTY, MINNESOTA.

I hereby certify that this document was filed in this office at 9 o'clock A.M. on the 16th day of March, 19 89.

Carmen Ostlie, County Recorder
By _____, Deputy

Document No. 227291

NORTHEAST corner, Section 24, Township 117 North, Range 30 West

Certificate of Location of Government Corner

This corner was not set by the government. Corner fell in lake.

1921 survey by E.L.Higgins shows a distance of 2560 feet to the east quarter corner of Section 24 and a distance of 2560 feet to the east quarter corner of Section 13.

In December, 1968, we measured the east line of Section 24 and Section 13 and set a temporary corner half way between the east quarter corners of Sections 24 and 13.

On May 31, 1969, we found a stone at approximately the location of our temporary corner. This stone was on the south shoulder of a gravel road. We replaced the stone with a McLeod County cast iron monument in 1971 and took reference ties.

Our measured distance to the east quarter corner of Section 24 is 2560.20 feet and to the east quarter of Section 13 is 2561.30, only 0.55 feet from a split between the corners. The corner is in line with a fence to the north.

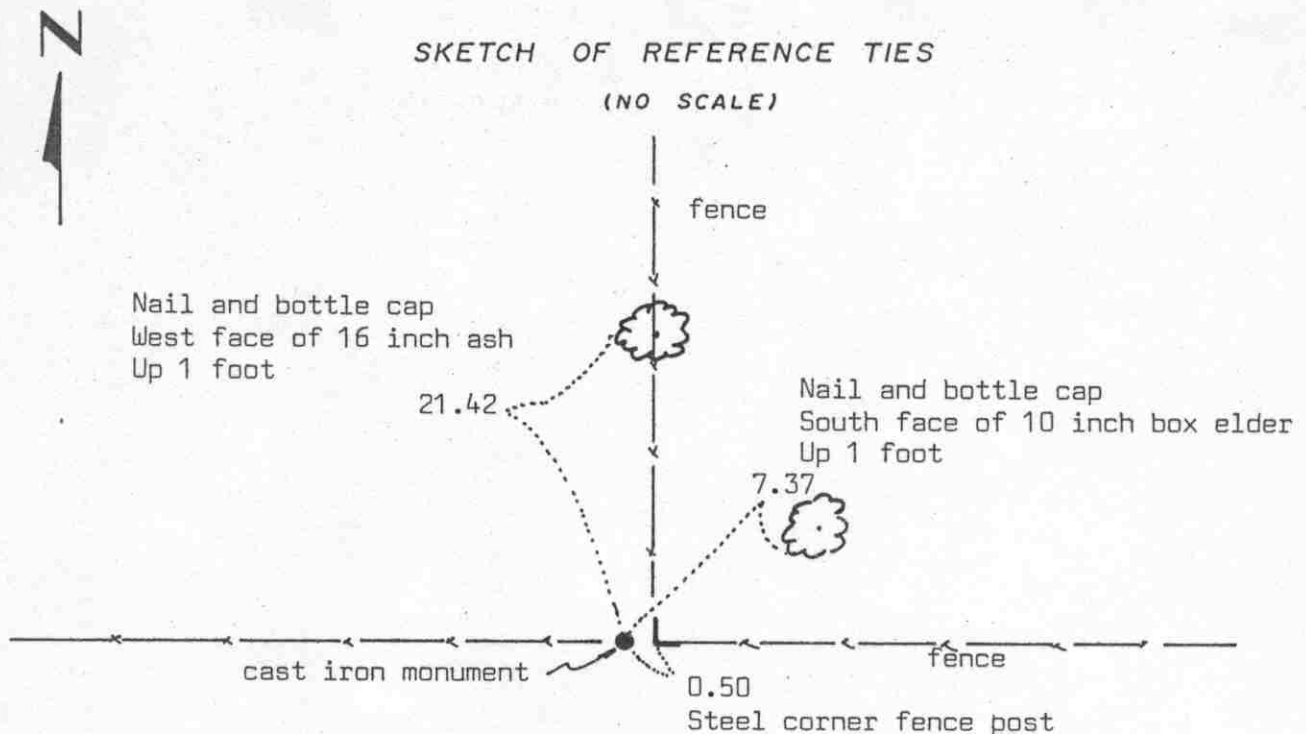
We accept the location of the stone as the correct location of the northeast corner of Section 24. We don't know if E.L.Higgins set this stone, his notes don't show that he did. His notes show the corner in the lake. The stone falls so close to being on a split between the quarter corners and we feel the fence has perpetuated the range line between Ranges 29 and 30 and there being no evidence to the contrary we feel this is the correct corner.

EAST QUARTER corner, Section 24, Township 117 North, Range 30 West

Certificate of Location of Government Corner

SKETCH OF REFERENCE TIES

(NO SCALE)



Statement of evidence relative to this corner location on sheet 2

I hereby certify that this document was prepared by me or under my direct supervision.

Willard Pellinen

Willard Pellinen
McLeod County Surveyor
License No. 9626

Date 7/22/89

OFFICE OF THE COUNTY RECORDER
MCLEOD COUNTY, MINNESOTA.

I hereby certify that this document was filed in this office at 2 o'clock P.M. on the 27th day of July, 19 89.

Carmen J. Jellie, County Recorder
By _____, Deputy

Document No. 229188

EAST QUARTER corner, Section 24, Township 117 North, Range 30 West

Certificate of Location of Government Corner

This corner was originally established by the government in 1855. John Ryan set a post and had reference ties to 2 bearing trees.

1920 survey in Section 19, Township 117, Range 29, shows a $2\frac{1}{2}$ inch by $2\frac{1}{2}$ inch by 2 foot iron monument at the intersection of fences.

1921 survey notes by E.L.Higgins also shows an iron monument at the corner.

1929 survey notes by Higgins shows a monument in place and a distance of 2560 to the northeast corner of Section 24.

May 31, 1969. We measured the east line of Section 24 and found a $2\frac{1}{2}$ inch by $2\frac{1}{2}$ inch by 2 foot iron monument at the fence intersection. We had a distance of $2560 \pm$ feet to the northeast corner of the section. We replaced the found iron monument with a McLeod County cast iron monument and took reference ties.

February 23, 1989. We found the monument in good condition and took new reference ties.

We believe the found iron monument and the fence intersection have perpetuated the correct location of the quarter corner.

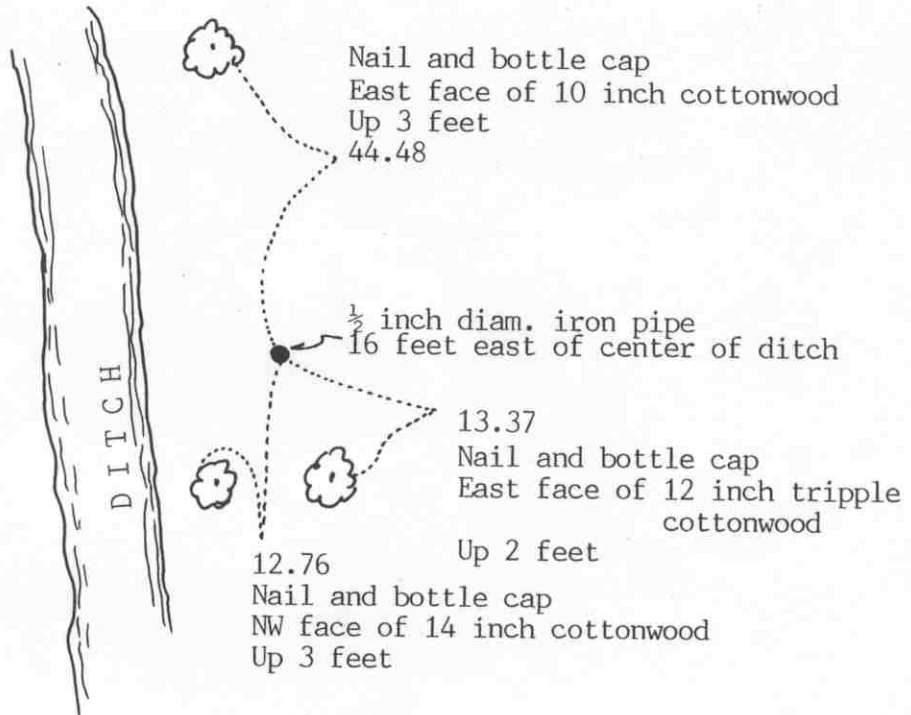
M.C. NO. 18 corner, Section 20, Township 117 North, Range 29 West

Certificate of Location of Government Corner

SKETCH OF REFERENCE TIES

(NO SCALE)

This corner is 419.92 feet north of the southeast corner of Section 29 and 2164.23 feet south of the E $\frac{1}{4}$ corner of Section 29, on straight line.



Statement of evidence relative to this corner location on sheet 2

I hereby certify that this document was prepared by me or under my direct supervision.

Willard Pellinen

Willard Pellinen
McLeod County Surveyor
License No. 9626

Date June 15, 1991

OFFICE OF THE COUNTY RECORDER MCLEOD COUNTY, MINNESOTA.

I hereby certify that this document was filed in this office at 9 o'clock A.M. on the 20th day of June, 1991.

Carmen Ostlie, County Recorder

By Shyllis Sopkowiak, Deputy

Document No. 239537

Meander cor. No. 18 corner, Section 20, Township 117 North, Range 29 West*Certificate of Location of Government Corner*

May, 1856. A. H. Runyon of the General Land Office set a post and marked an aspen and a black cherry tree for bearing trees.

February 16, 1983. We set this meander corner, a half inch diameter iron pipe, on line and on a proration of government distances between the east quarter corner and the southeast corner of Section 20. We took available ties.

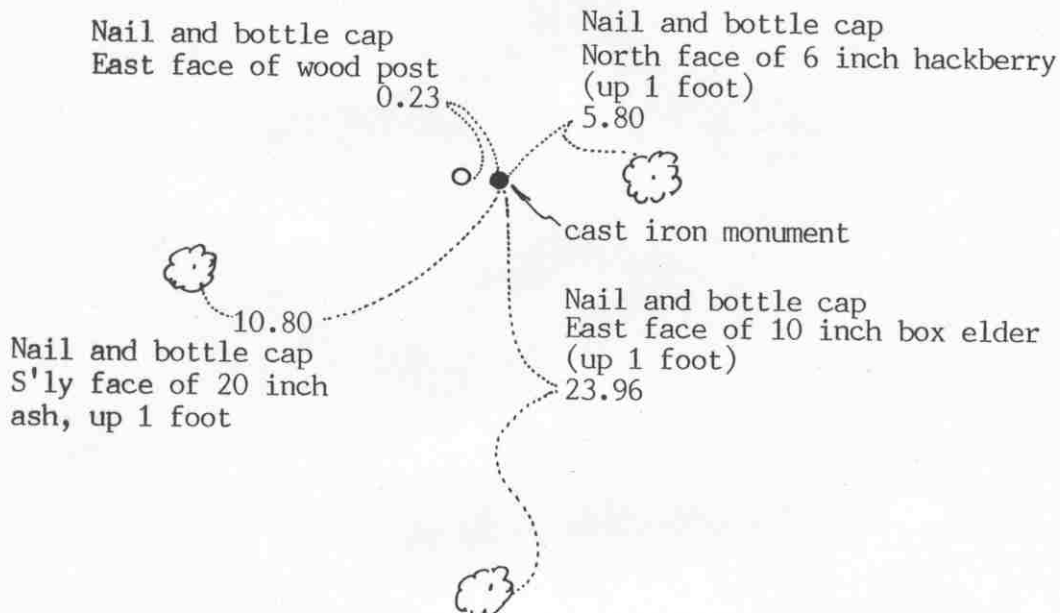
May 22, 1990. We found the iron pipe but all the reference ties had been destroyed. We took new reference ties.

Certificate of Location of Government Corner

SKETCH OF REFERENCE TIES
(NO SCALE)



SECTION 20



SECTION 21

Statement of evidence relative to this corner location on sheet 2

I hereby certify that this document was prepared by me or under my direct supervision.

Willard Pellinen

Willard Pellinen
McLeod County Surveyor
License No. 9626

Date August 24, 1991

OFFICE OF THE COUNTY RECORDER
MCLEOD COUNTY, MINNESOTA.

I hereby certify that this document was filed in this office at 9 o'clock A.M. on the 27th day of August, 1991.

Armen Botlie, County Recorder

By _____, Deputy

Document No. 240571

EAST QUARTER corner, Section 20, Township 117 North, Range 29 West

Certificate of Location of Government Corner

May, 1856. A. H. Runyon of the General Land Office set a post at the corner and marked 2 aspens for bearing trees.

April 28, 1921. Field notes of E.L.Higgins, surveyor, shows a fence post at the corner.

February, 1975. Edward Piker says fence corner is in the same place as in 1921. Mr. Piker has lived in the Northwest Quarter of Section 21 all his life. Martin Nelson, 45 years old, in the Southwest Quarter of SEction 21 for 17 years old also said the fence corner is the quarter corner.

November 25, 1975. McCombs Knutson Associates (Dickman Knutson, county surveyor) set a McLeod County cast iron monument at the fence corner, fences west and north, and took reference ties.

June 15, 1990. We found the monument in good condition, flush with the surface, and took new reference ties.

We believe the fence corner has perpetuated the correct location of the quarter corner.

NORTHEAST corner, Section 20, Township 117 North, Range 29 West

Certificate of Location of Government Corner

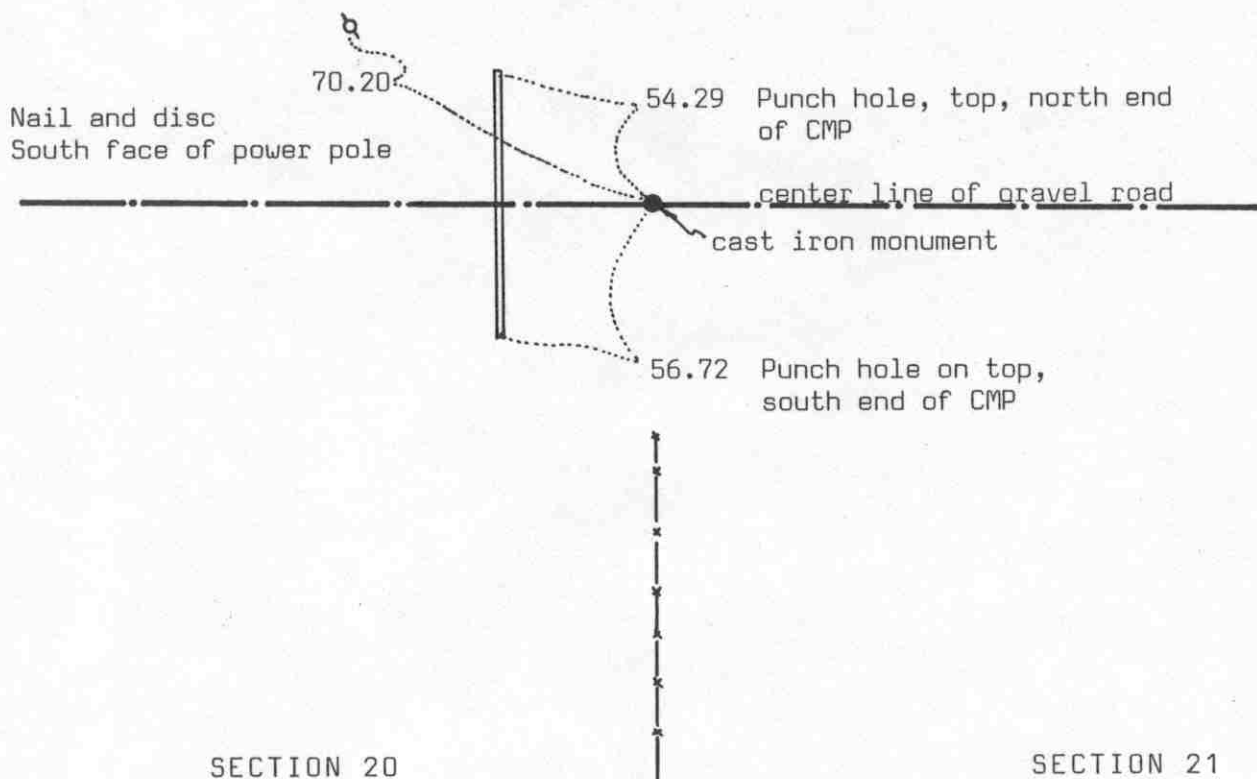


SKETCH OF REFERENCE TIES

(NO SCALE)

SECTION 17

SECTION 16

Statement of evidence relative to this corner location on sheet 2

I hereby certify that this document was prepared by me or under my direct supervision.

Willard Pellinen

Willard Pellinen
McLeod County Surveyor
License No. 9626

Date 5/7/90

OFFICE OF THE COUNTY RECORDER
MCLEOD COUNTY, MINNESOTA.

I hereby certify that this document was filed in this office at 8:30 o'clock A. M. on the 22nd day of May, 1990.

Carmen Ostlie, County Recorder

By _____, Deputy

Document No. 233482

NORTHEAST

corner, Section 20,Township 117North, Range 29

West

Certificate of Location of Government Corner

May, 1856. A.H.Runyon of the General Land Office established this corner. He set a post and had reference ties to 4 trees.

1974. McCombs Knutson Associates (Dickman Knutson, county surveyor) dug for the corner with a backhoe but found nothing.

November 11, 1974. Knutson set a McLeod County cast iron monument on the center line of a gravel road on the northerly extension of a fence, as per testimony be adjoining land owners.

December, 1976. Knutson set a $\frac{1}{2}$ inch diameter iron pipe over the monument and took new reference ties.

April 7, 1989. We found the iron pipe and the reference ties still good.

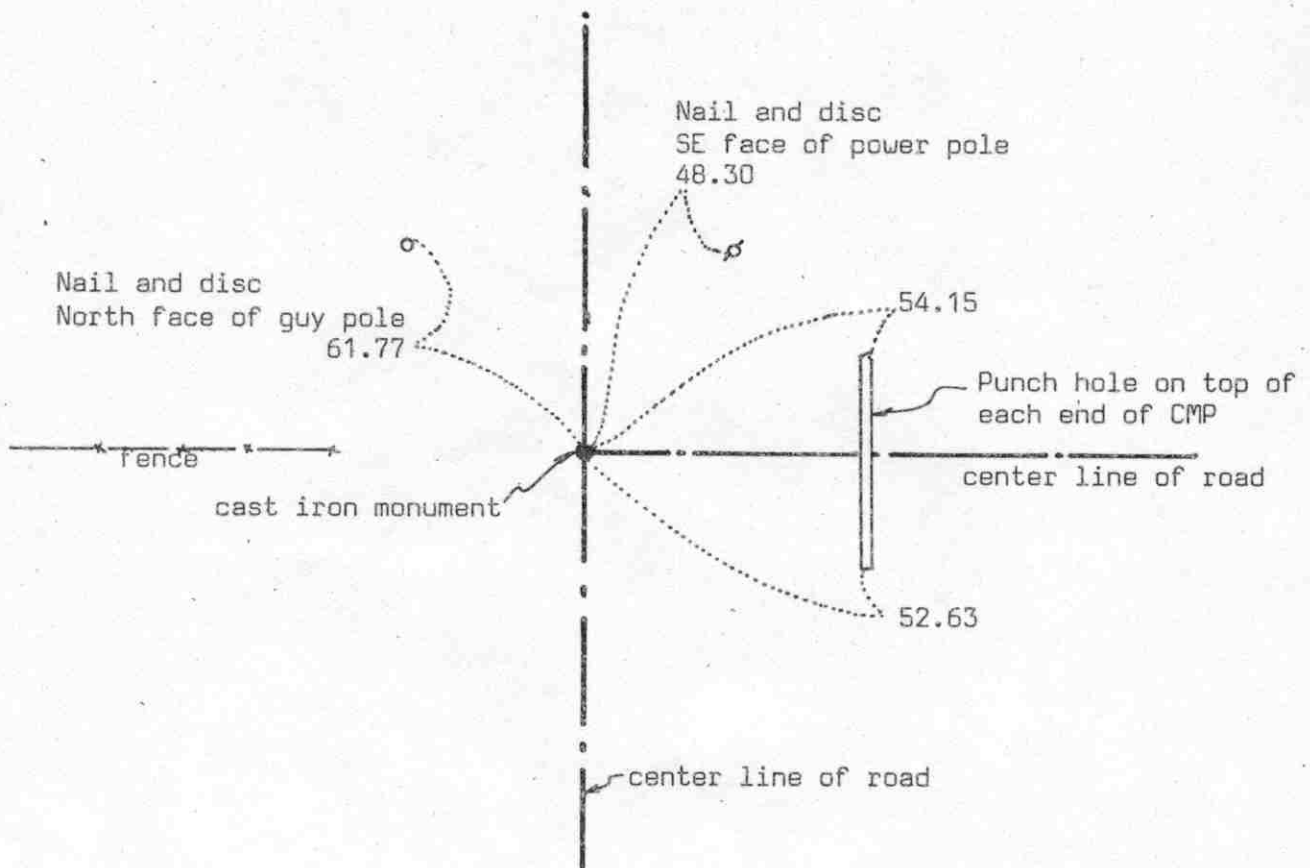
There being no evidence to the contrary, we accept the monument as marking the correct location of the section corner.

North Quarter corner, Section 20, Township 117 North, Range 29 West

Certificate of Location of Government Corner

SKETCH OF REFERENCE TIES (NO SCALE)

SECTION 17



SECTION 20

Statement of evidence relative to this corner location on sheet 2

I hereby certify that this document was prepared by me or under my direct supervision.

Willard Pellinen

Willard Pellinen
McLeod County Surveyor
License No. 9626

Date 6/9/90

OFFICE OF THE COUNTY RECORDER
MCLEOD COUNTY, MINNESOTA.

I hereby certify that this document was filed in this office at 2 o'clock P. M. on the 21st day of June, 19 90.

Carmen Ostlie, County Recorder

By Jan Petrick, Deputy

Document No. 234014

NORTH QUARTER corner, Section 20, Township 117 North, Range 29 West

Certificate of Location of Government Corner

May, 1856. A.H.Runyon of the General Land Office established this corner. He set a post and had reference ties to 2 bearing trees.

1968. Lew Merrill, former county surveyor, said there is an iron pipe at the corner. He said it could be quite deep.

May, 1970. McCombs Knutson Associates (Dickman Knutson, county surveyor) found an iron pipe down 3 feet below the road surface.

August 12, 1974. Knutson set a McLeod County cast iron monument at the corner and took reference ties. Kenneth Fredrickson, 53 years old, in the southwest quarter of Section 17 all his life, and Levi Tupa, 53 years old, in the Northwest Quarter of Section 20 all his life, both agree this is the correct location of the quarter corner. This falls about 7 feet east of being on a split between the section corners.

April 7, 1989. We found the monument in good condition and the reference ties good.

We believe the iron pipe found by Knutson had perpetuated the correct location of the quarter corner.

EAST QUARTER corner, Section 21, Township 117 North, Range 29 West

Certificate of Location of Government Corner

SKETCH OF REFERENCE TIES

(NO SCALE)



SECTION 21

SECTION 22

- cast iron monument at corner
- + Steel fence post 0.8 south of quarter corner

Statement of evidence relative to this corner location on sheet 2

I hereby certify that this document was prepared by me or under my direct supervision.

Willard Pellinen

Willard Pellinen
McLeod County Surveyor
License No. 9626

Date August 24, 1991

OFFICE OF THE COUNTY RECORDER
MCLEOD COUNTY, MINNESOTA.

I hereby certify that this document was filed in this office at 9 o'clock A.M. on the 27th day of August, 19 91.

Armen Ostlie, County Recorder

By _____, Deputy

Document No. 240572

EAST QUARTER corner, Section 21, Township 117 North, Range 29 West

Certificate of Location of Government Corner

1856. A.H.Runyon of the General Land Office set a post at the corner and marked black cherry tree and an aspen for bearing trees.

1969. Mr. Gensmer, 84 years old, said there was a 3 foot long wood post at the corner. There used to be a pile of stones at this location, he said.

February 17, 1975. McCombs Knutson Associates (Dickman Knutson, county surveyor) measured the east line of Section 21 and found the wood post (a 2 X 4) was within $\frac{1}{2}$ foot of being half way between the section corners. Field lines running north and west from the post. Fences $\frac{1}{4}$ mile north and $\frac{1}{4}$ mile south were within a foot of being half way between the post and the section corners.

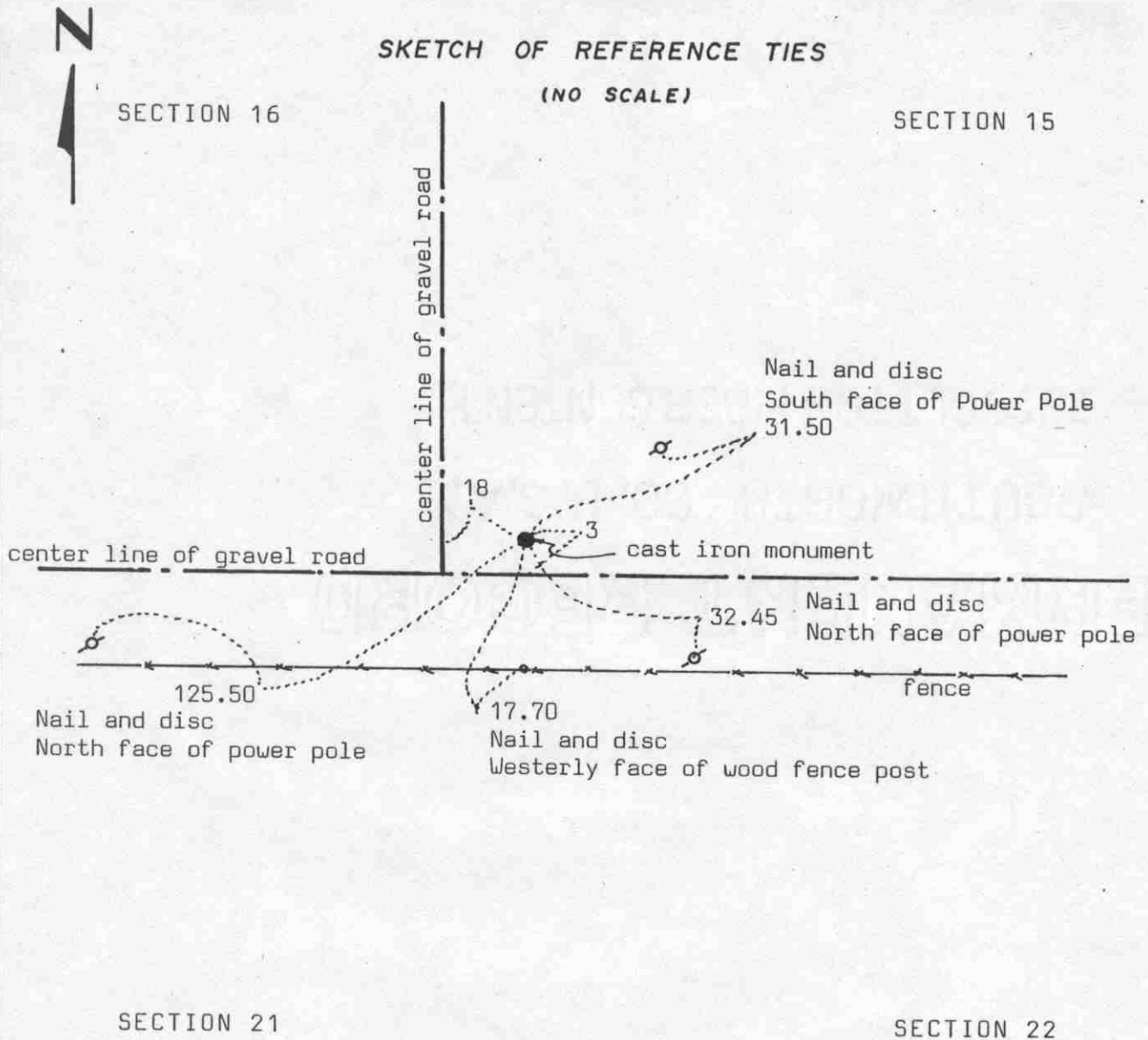
November 25, 1975. Knutson replaced the wood post with a McLeod County cast iron monument and placed a steel fence post 0.8 foot south of the monument. No other reference ties available.

June 15, 1990. We found the monument in good condition north of the steel fence post.

We accept the wood post as having perpetuated the correct location of the quarter corner.

NORTHEAST corner, Section 21, Township 117 North, Range 29 West

Certificate of Location of Government Corner



Statement of evidence relative to this corner location on sheet 2

I hereby certify that this document was prepared by me or under my direct supervision.

Willard Pellinen
Willard Pellinen
McLeod County Surveyor
License No. 9626
Date 5/6/90

OFFICE OF THE COUNTY RECORDER
MCLEOD COUNTY, MINNESOTA.

I hereby certify that this document was filed in this office at 8:30 o'clock A.M. on the 22nd day of May, 1990.

Carmen Ostlie, County Recorder
By _____, Deputy

Document No. 233483

NORTHEAST corner, Section 21, Township 117 North, Range 29 West

Certificate of Location of Government Corner

1856. This corner was established by A.H. Runyon of the General Land Office. He set a post and had reference ties to 1 elm, 1 lind and 2 walnut trees.

November 13, 1897. E.L. Higgins found a stone at this corner and he shows a distance of 2618 feet to the north quarter corner of Section 21.

19___. RCM, surveyors, found an iron pipe at this corner.

McCombs Knutson Associates (Dickman Knutson, county surveyor) found the iron pipe used by RCM and also a 1 inch diameter iron pin below the iron pipe.

July 22, 1975. Knutson replaced the iron pipe and iron pin with a McLeod County cast iron monument and took reference ties.

October 3, 1975. Knutson measured the north line of Section 21 and had a distance of 2617.22 feet to the north quarter corner compared with 2618 in 1897 by Higgins.

April 7, 1989. We found the cast iron monument in good condition down 8 inches below the gravel road surface and took new rererence ties.

We believe the iron pipe and iron pin found by Knutson have perpetuated the correct location of the section corner.

NORTH QUARTER corner, Section 21, Township 117 North, Range 29 West

Certificate of Location of Government Corner



SKETCH OF REFERENCE TIES (NO SCALE)

SECTION 16

fence

Nail and disc
East face of power pole
33.00

cast iron monument
center line of gravel road

25.55

32.25

Punch hole on top, each end of CMP

field line

SECTION 21

Statement of evidence relative to this corner location on sheet 2

I hereby certify that this document
was prepared by me or under my
direct supervision.

Willard Pellinen
Willard Pellinen
McLeod County Surveyor
License No. 9626

Date 5/7/90

OFFICE OF THE COUNTY RECORDER
MCLEOD COUNTY, MINNESOTA.

I hereby certify that this document was filed in this
office at 8:30 o'clock A. M. on the 22nd day
of May, 1990.

Carmen Ostlie, County Recorder

By _____, Deputy

Document No. 233484

NORTH QUARTER corner, Section 21, Township 117 North, Range 29 West

Certificate of Location of Government Corner

May, 1856. A.H.Runyon of the General Land Office established this corner. He set a post and had reference ties to 2 trees.

November 13, 1897. Survey field notes by E.L.Higgins show a "post" at the corner and a distance of 2618 feet to the northeast corner of Section 21.

August 12, 1974. McCombs Knutson Associates (Dickman Knutson, county surveyor) found a 1 inch diameter iron pipe at the corner. Knutson measured 2717.22 feet to the northeast corner of Section 21.

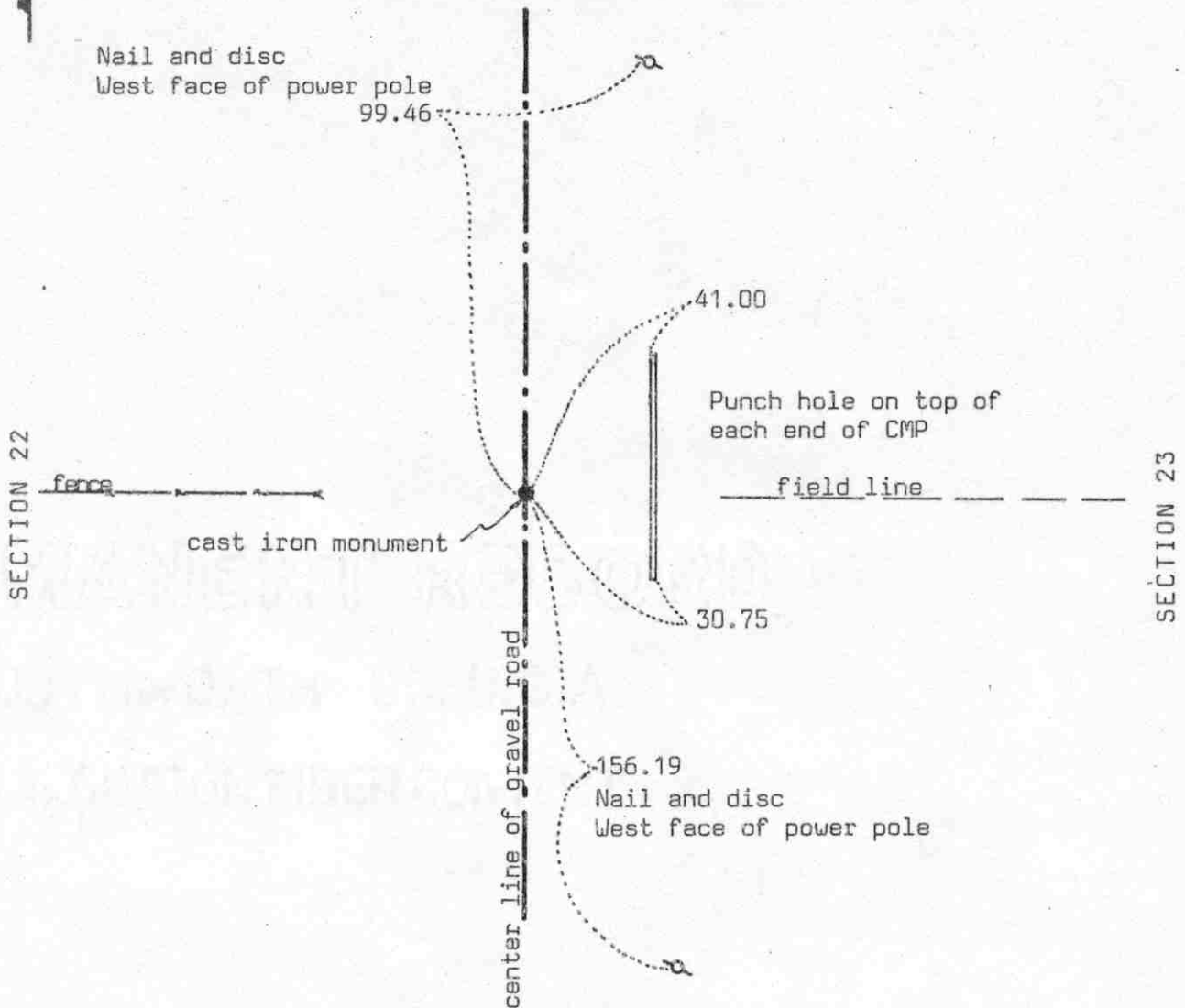
November 11, 1974. Knutson replaced the iron pipe with a McLeod County cast iron monument.

April 7, 1989. We found the cast iron monument in good condition and the reference ties good.

EAST QUARTER corner, Section 22, Township 117 North, Range 29 West

Certificate of Location of Government Corner

SKETCH OF REFERENCE TIES (NO SCALE)



Statement of evidence relative to this corner location on sheet 2

I hereby certify that this document
was prepared by me or under my
direct supervision.

Willard Pellinen

Willard Pellinen
McLeod County Surveyor
License No. 9626

Date 6/16/90

OFFICE OF THE COUNTY RECORDER
MCLEOD COUNTY, MINNESOTA.

I hereby certify that this document was filed in this
office at 2 o'clock P.M. on the 21st day
of June, 19 90.

Armen Oetli, County Recorder

By Jan Petrick, Deputy

Document No. 234016

EAST QUARTER corner, Section 22, Township 117 North, Range 29 West

Certificate of Location of Government Corner

May, 1856. A.H.Runyon of the General Land Office established this corner. He set a post and had reference ties to 2 bearing trees.

August 12, 1974. McCombs Knutson Associates (Dickman Knutson, county surveyor) set a McLeod County cast iron monument over an iron pipe which they had found earlier. The adjoining property owners stated this was the correct quarter corner. This was also within a few feet of 1926 distance by E.L.Higgins to the northeast and southeast corners of Section 22.

April 7, 1989. We found the cast iron monument in good condition and the reference ties good.

We accept the iron pipe found by Knutson and later the cast iron monument as having perpetuated the correct location of the quarter corner.

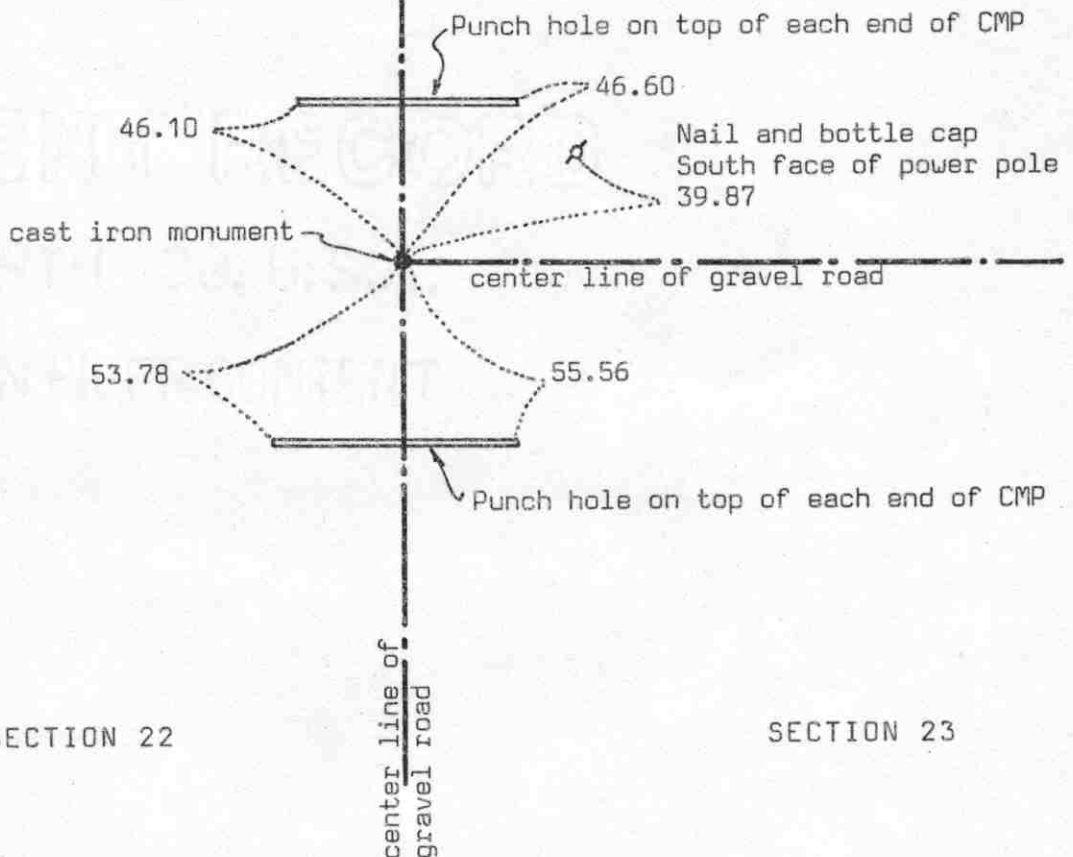
NORTHEAST corner, Section 22, Township 117 North, Range 29 West

Certificate of Location of Government Corner

SKETCH OF REFERENCE TIES
(NO SCALE)

SECTION 15

SECTION 14



SECTION 22

SECTION 23

Statement of evidence relative to this corner location on sheet 2

I hereby certify that this document was prepared by me or under my direct supervision.

Willard Pellinen
Willard Pellinen
McLeod County Surveyor
License No. 9626

Date 6/10/90

OFFICE OF THE COUNTY RECORDER
MCLEOD COUNTY, MINNESOTA.

I hereby certify that this document was filed in this office at 2 o'clock P.M. on the 21st day of June, 1990.

Carmen Ostlie, County Recorder
By Jan Petrick, Deputy
Document No. 234015

NORTHEAST corner, Section 22, Township 117 North, Range 29 West

Certificate of Location of Government Corner

May, 1856. A.H.Runyon of the General Land Office established this corner. He set a post and had reference ties to 4 trees.

August, 1898. Notes by E.L.Higgins, surveyor, show a distance of 5267 feet to the southeast corner of the section. He doesn't show what he found at the corner.

May, 1926. Higgins found a square stone at the corner and he measured 5267 feet to the southeast corner of Section 22.

1964. The State Conservation Department assumed the corner at the center line intersection of the roads.

May 15, 1974. McCombs Knutson Associates (Dickman Knutson, county surveyor) dug for the corner, John Tupa from Hutchinson, with a backhoe. They found a 5 inch diameter stone down $2\frac{1}{2}$ feet below the road surface. They found part of an old wagon (iron side post) down 3 feet. At 4 feet down they found a 1 inch diameter iron shaft and a $\frac{1}{2}$ inch by 4 inch by 16 inch flat iron bar. Down at $5\frac{1}{2}$ feet below the road surface they found a stone, 6 inches square on top, and 16 inches long. All items found were approximately at the same location east, west, north and south.

May 31, 1974. Knutson set a McLeod County cast iron monument using the ties to the center of the squared stone which they found $5\frac{1}{2}$ feet down and took additional reference ties.

April 7, 1989. We found the cast iron monument in good condition and the reference ties good.

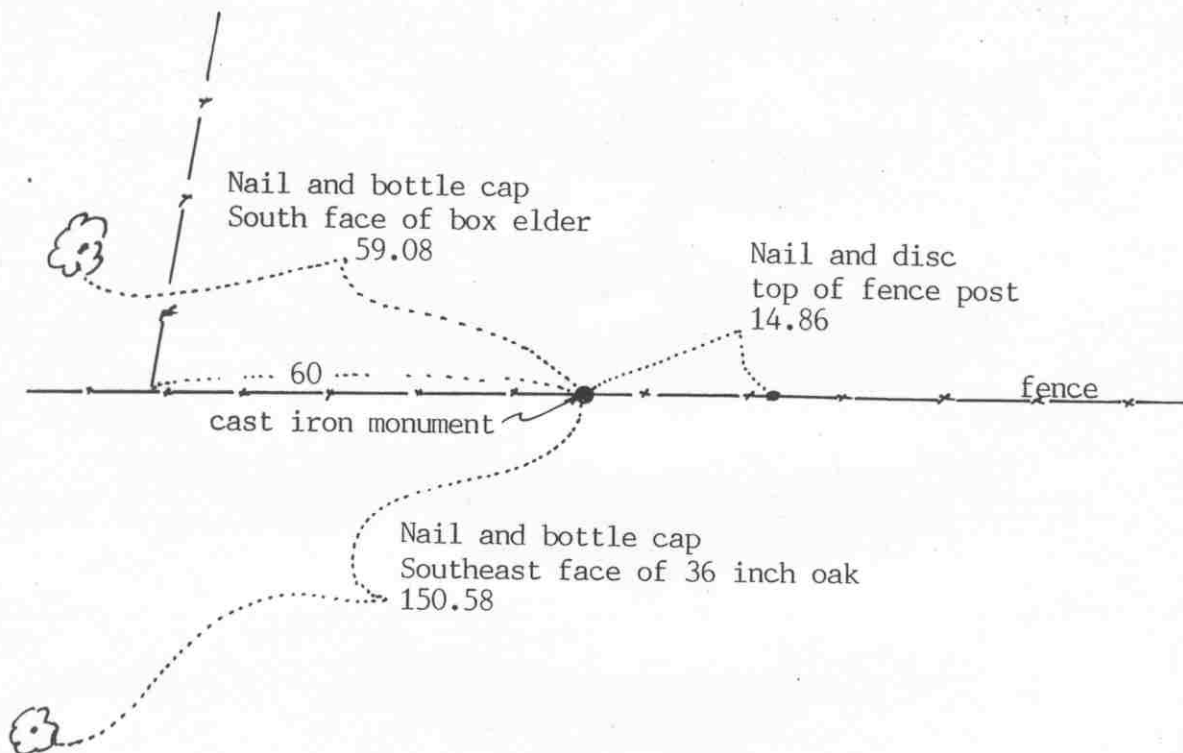
We believe the square stone found by Knutson is the same stone shown in the survey notes by Higgins in 1926 and that it had perpetuated the correct location of the section corner.

Certificate of Location of Government Corner

SKETCH OF REFERENCE TIES

(NO SCALE)

SECTION 15



SECTION 22

Statement of evidence relative to this corner location on sheet 2

I hereby certify that this document was prepared by me or under my direct supervision.

Willard Pellinen
Willard Pellinen
McLeod County Surveyor
License No. 9626

Date April 14, 1991

OFFICE OF THE COUNTY RECORDER
MCLEOD COUNTY, MINNESOTA.

I hereby certify that this document was filed in this office at 9 o'clock A.M. on the 19th day of April, 1991.

Carmen Hotlie, County Recorder

By _____, Deputy

Document No. 238420

NORTH QUARTER corner, Section 22, Township 117 North, Range 29 West*Certificate of Location of Government Corner*

May, 1856. The government ran the north line of Section 22. The north quarter corner was not set because it fell in the lake at that time. A.H.Runyon of the General Land Office set a meander corner 49.5 feet west of the quarter corner.

April 8, 1899. E.L.Higgins, county surveyor, found a post under the east-west fence line and also found a post at the meander corner 49.5 feet west.

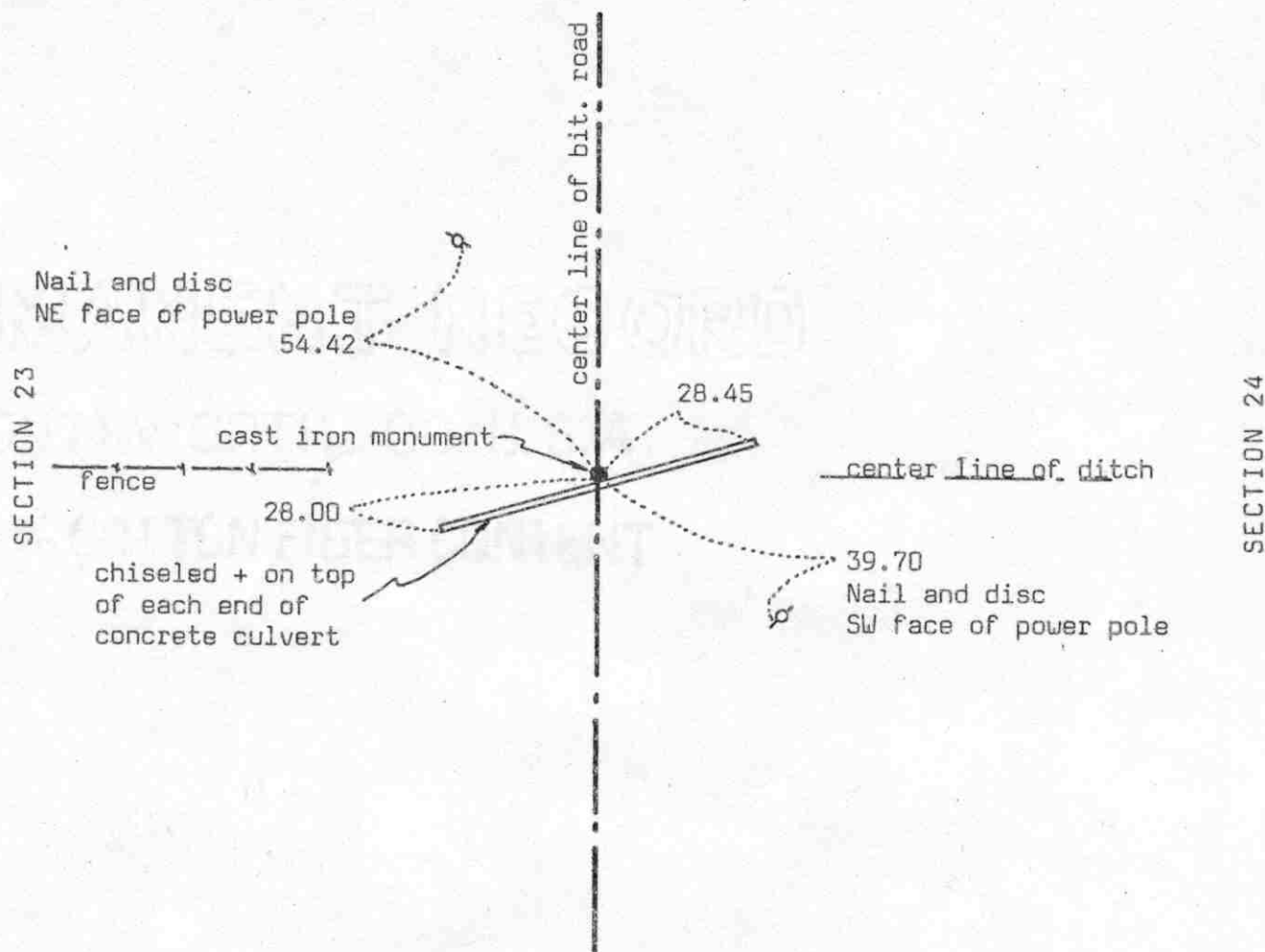
September 21, 1984. We set a McLeod County cast iron monument half way between the section corners along the east-west fence line. This falls about 55 feet north of a straight line between the section corners. An east-west fence on the east side of the lake, 855 feet west of the northeast corner of the section falls 6 feet north of the line. The fence 517 feet west of the northeast corner of the section falls 1 foot south of the line.

The driveway west of the north quarter corner, 1742 feet east of the northwest corner of the section falls south of the section line.

EAST QUARTER corner, Section 23, Township 117 North, Range 29 West

Certificate of Location of Government Corner

SKETCH OF REFERENCE TIES
(NO SCALE)



Statement of evidence relative to this corner location on sheet 2

I hereby certify that this document was prepared by me or under my direct supervision.

Willard Pellinen

Willard Pellinen
McLeod County Surveyor
License No. 9626

Date 6/10/90

OFFICE OF THE COUNTY RECORDER
MCLEOD COUNTY, MINNESOTA.

I hereby certify that this document was filed in this office at 2 o'clock P.M. on the 21st day of June, 19 90.

Carmen Petrie, County Recorder

By Jan Petrick, Deputy

Document No. 234017

EAST QUARTER corner, Section 23, Township 117 North, Range 29 West

Certificate of Location of Government Corner

May, 1856. A.H.Runyon of the General Land Office established this corner. He set a post in a marsh and had reference ties to 2 bearing trees.

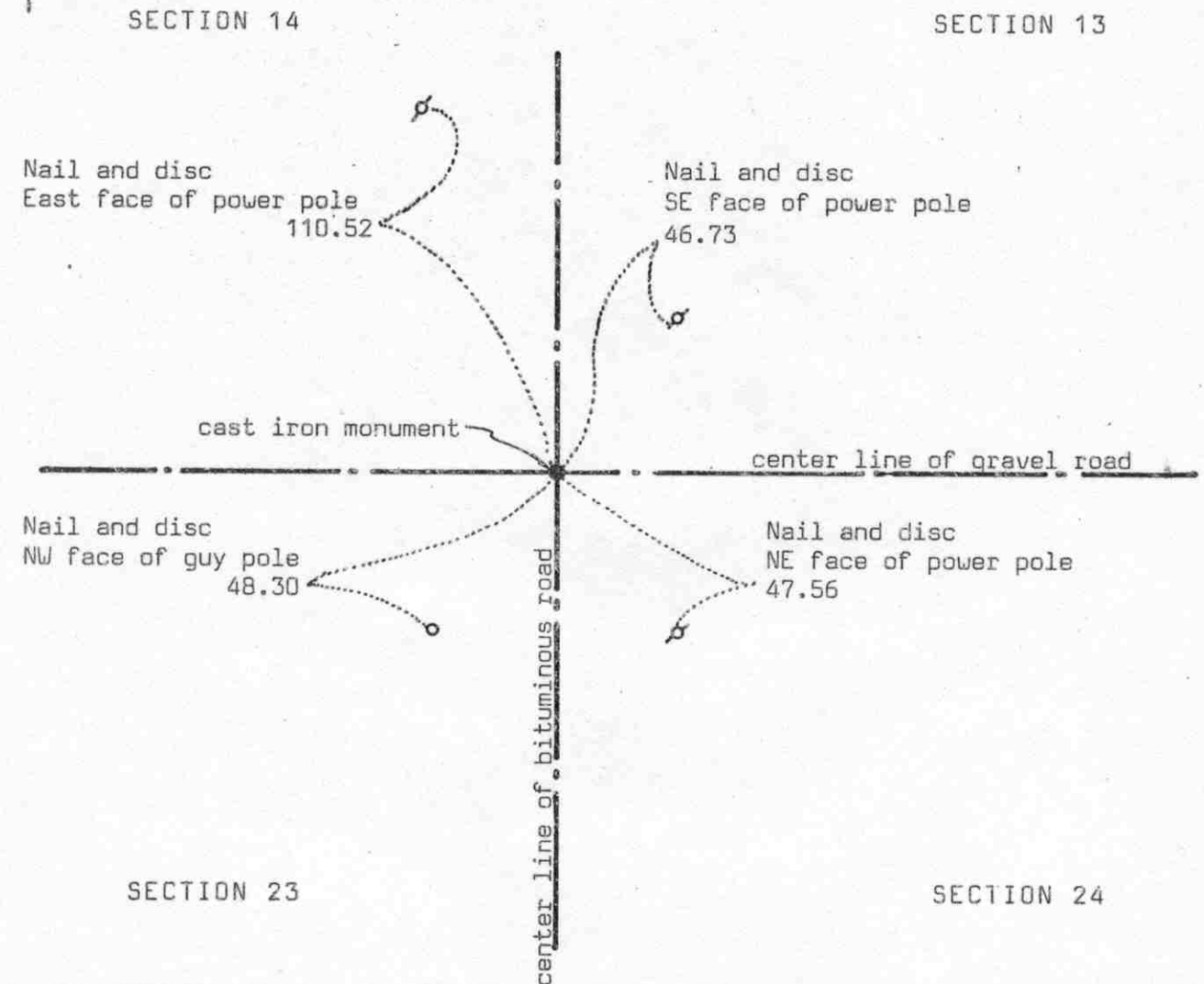
June 19, 1974. McCombs Knutson Associates (Dickman Knutson, county surveyor) set a cast iron monument on the center line of the bituminous road in line with a fence to the west and the center line of ditch to the east. Fred Plihal, 69 years old, in the Southwest Quarter of Section 24 all his life, said this was the correct location. He said any corner would have been destroyed when the concrete culvert was placed across the road. This corner falls within 5 feet of being on a split between the section corners. A fence running west, $\frac{1}{4}$ mile north, falls on the 1/16 line and a field line running west $\frac{1}{4}$ mile south is within a few feet of being on the 1/16 line.

April 7, 1989. We found the monument in good condition and the reference ties good.

There being no evidence to the contrary, we must accept the monument set by Knutson as marking the correct location of the quarter corner.

NORTHEAST corner, Section 23, Township 117 North, Range 29 West

Certificate of Location of Government Corner

SKETCH OF REFERENCE TIES
(NO SCALE)

Statement of evidence relative to this corner location on sheet 2

I hereby certify that this document
was prepared by me or under my
direct supervision.

Willard Pellinen

Willard Pellinen
McLeod County Surveyor
License No. 9626

Date 6/3/90

OFFICE OF THE COUNTY RECORDER
MCLEOD COUNTY, MINNESOTA.

I hereby certify that this document was filed in this
office at 8:30 o'clock A. M. on the 18th day
of June, 19 90.

Carmen Ostlie, County Recorder
By Jim Petrick, Deputy
Document No. 233932

NORTHEAST corner, Section 23, Township 117 North, Range 29 West

Certificate of Location of Government Corner

1856. This corner was established by the General Land Office. A.H.Runyon set a post and had reference ties to 4 trees.

March 12, 1974. McCombs Knutson Associates (Dickman Knutson, county surveyor) set a temporary corner at the center line intersection of the roads. Adjoining land owners all agree this is the correct location of the section corner.

May 15, 1974. Knutson dug for the corner, John Tupa from Hutchinson with a backhoe. They found nothing.

June 19, 1974. Knutson set a McLeod County cast iron monument at the center line intersection of the roads and took reference ties.

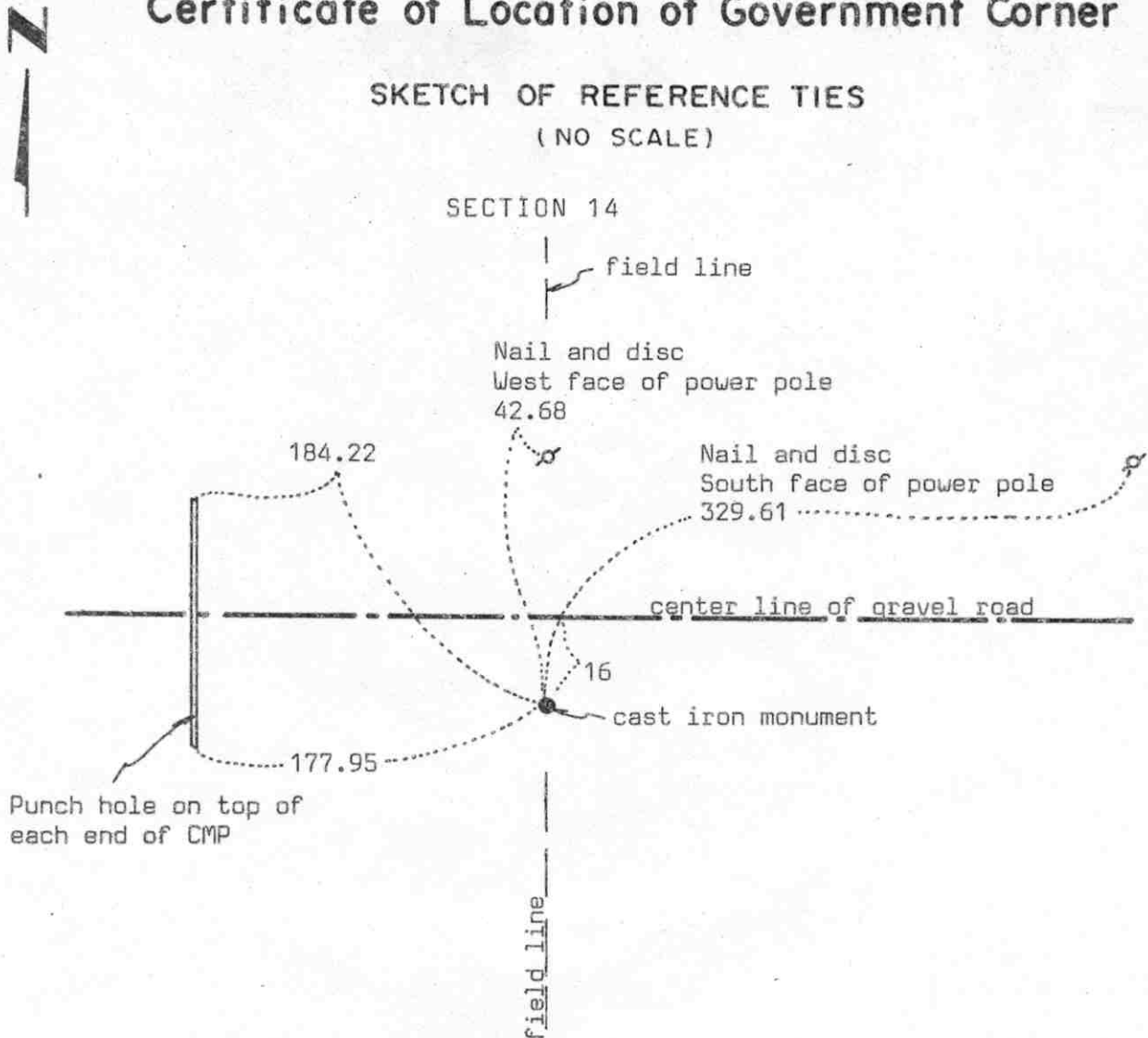
April 1, 1989. We found the cast iron monument in good condition but only 1 reference tie remaining. We took additional ties.

There being no evidence to the contrary, we accept the cast iron monument as marking the correct location of the section corner. The center lines of the roads have perpetuated the correct location of the corner.

NORTH QUARTER corner, Section 23, Township 117 North, Range 29 West

Certificate of Location of Government Corner

SKETCH OF REFERENCE TIES (NO SCALE)



Statement of evidence relative to this corner location on sheet 2

I hereby certify that this document
was prepared by me or under my
direct supervision.

Willard Pellinen

Willard Pellinen
McLeod County Surveyor
License No. 9626

Date 6/10/90

OFFICE OF THE COUNTY RECORDER
MCLEOD COUNTY, MINNESOTA.

I hereby certify that this document was filed in this
office at 2 o'clock P.M. on the 21st day
of June, 1990.

Carmen Jettie, County Recorder

By Jan Petrick, Deputy

Document No. 234018

NORTH QUARTER corner, Section 23, Township 117 North, Range 29 West

Certificate of Location of Government Corner

May, 1856. This corner was established by the General Land Office. A.H.Runyon set a post and had reference ties to 2 trees.

May 15, 1974. Mr. Frank Dostal, 71 years old, has lived in Section 23 all his life, said corner is on the south side of the road. He pointed out the location where he said the corner used to be. Corner was graded out when the road was rebuilt around 1948. His father owned the land on both sides of the road, in section 23 and section 14, and he gave permission to built the road all on the north side of the section line, because of trees and buildings. The center line of the road is on the section line at both northwest and northeast corners of the section according to Mr. Dostal. He said the power company set the power pole which is north of the corner, on the north-south quarter line of Section 14. He said there was a fence there at that time. His father asked the power company to set the pole along the fence line.

May 31, 1974. McCombs Knutson Associates (Dickman Knutson, county surveyor) set a McLeod County cast iron monument at the location pointed out by Mr. Dostal. They took available reference ties.

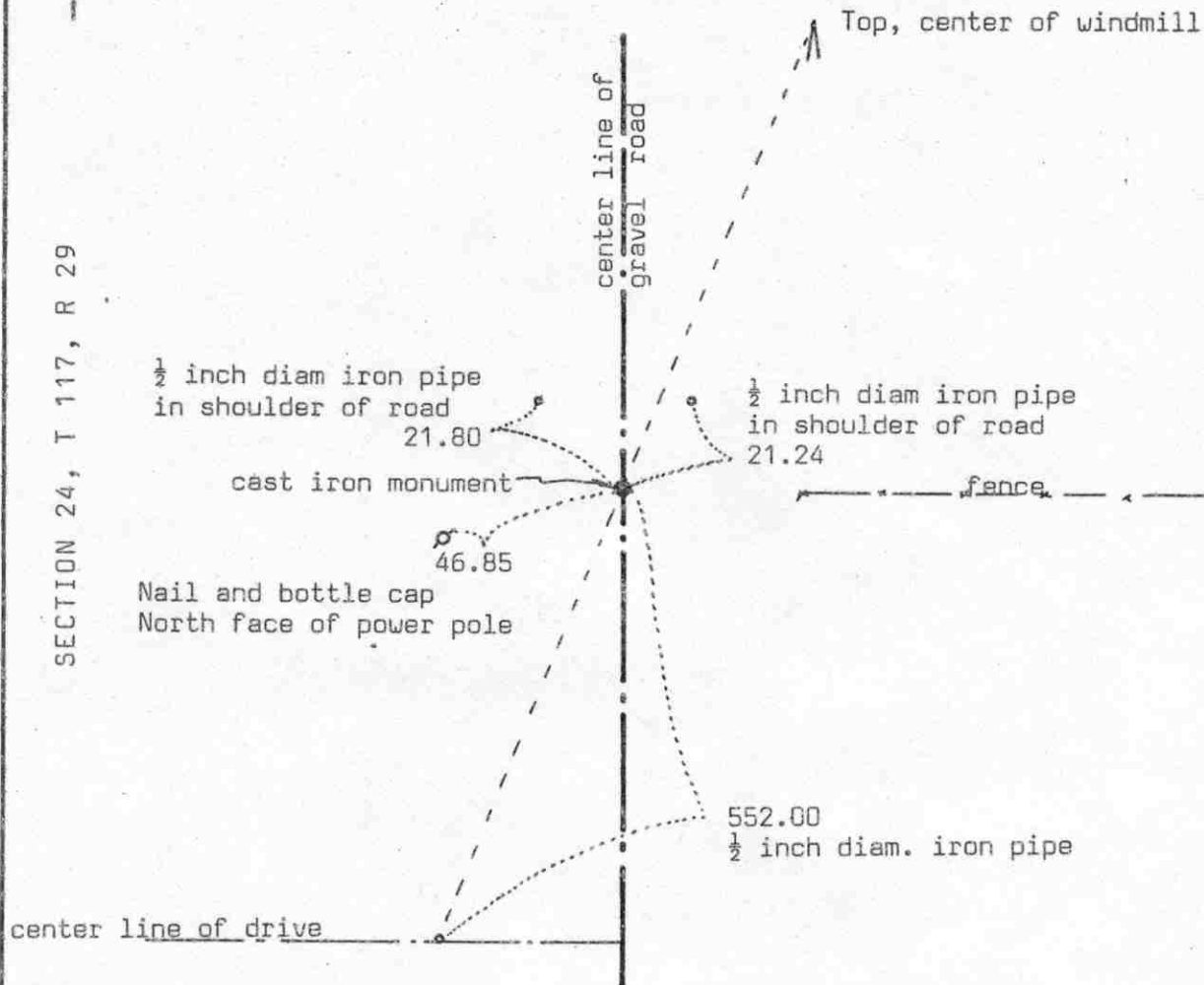
April 7, 1989. We found the monument in good condition and the reference ties good.

There being no evidence to the contrary, we accept the cast iron monument as marking the correct location of the quarter corner.

EAST QUARTER corner, Section 24, Township 117 North, Range 29 West

Certificate of Location of Government Corner

SKETCH OF REFERENCE TIES (NO SCALE)



Statement of evidence relative to this corner location on sheet 2

I hereby certify that this document was prepared by me or under my direct supervision.

Willard Pellinen

Willard Pellinen
McLeod County Surveyor
License No. 9626

Date 6/16/90

OFFICE OF THE COUNTY RECORDER
MCLEOD COUNTY, MINNESOTA.

I hereby certify that this document was filed in this office at 2 o'clock P.M. on the 21st day of June, 1990.

Carmen Jettie, County Recorder

By Jan Ketruck, Deputy

Document No. 234020

EAST QUARTER corner, Section 24, Township 117 North, Range 29 West

Certificate of Location of Government Corner

August, 1855. John Ryan of the General Land Office established this corner. He set a post in a wet marsh and had reference ties to 2 trees.

October 2, 1970. McCombs Knutson Associates (Dickman Knutson, county surveyor) dug for the corner. They found an old rotted wood post in the center line of the road in line with a fence to the east.

October 13, 1970. Knutson set a cast iron monument.

April 10, 1981. Monument had been destroyed when a concrete culvert a few feet north of the monument had been replaced by a CMP. We reset a $\frac{1}{2}$ inch diameter iron pipe using old reference ties.

July 30, 1981. Road is to be rebuilt. We took additional ties to reset corner after construction.

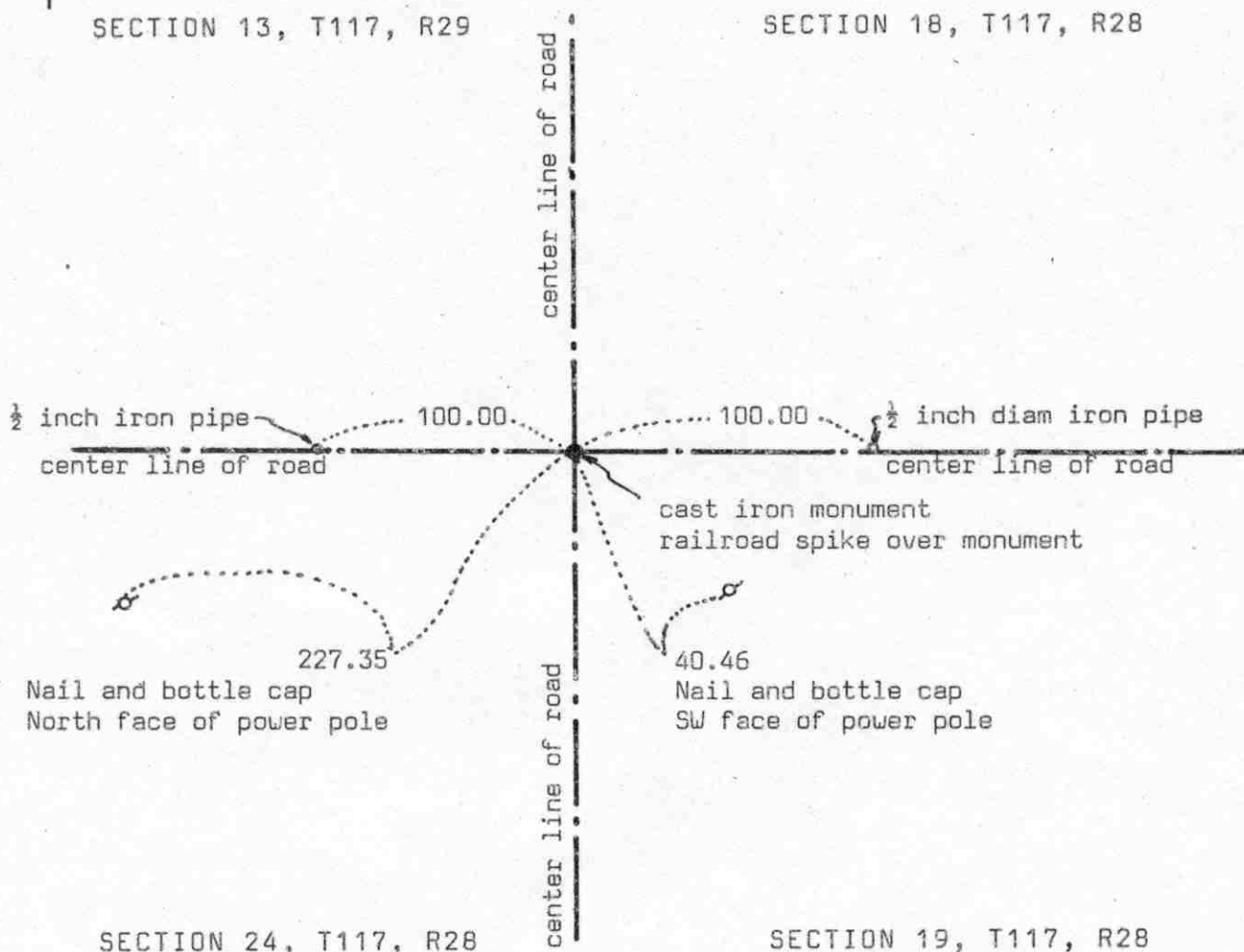
June 19, 1986. We reset a cast iron monument using the ties taken before road construction. We also set a $\frac{1}{2}$ inch by 14 inch iron pipe below the monument.

April 7, 1989. We found the monument in good condition and the reference ties good.

We accept the wood post found by Knutson as having perpetuated the correct location of the quarter corner.

NORTHEAST corner, Section 24, Township 117 North, Range 29 West

Certificate of Location of Government Corner

SKETCH OF REFERENCE TIES
(NO SCALE)

Statement of evidence relative to this corner location on sheet 2

I hereby certify that this document was prepared by me or under my direct supervision.

Willard Pellinen

Willard Pellinen
McLeod County Surveyor
License No. 9626

Date 6/16/90

OFFICE OF THE COUNTY RECORDER
MCLEOD COUNTY, MINNESOTA.

I hereby certify that this document was filed in this office at 2 o'clock P. M. on the 21st day of June, 1990.

Carmen Ostlie, County Recorder

By Jan Petrick, Deputy

Document No. 234019

NORTHEAST corner, Section 24, Township 117 North, Range 29 West

Certificate of Location of Government Corner

August, 1855. This corner was established by the General Land Office. John Ryan set a post and had reference ties to 4 bearing trees.

1935. County Highway Department field notes show a stone at this corner. They had a distance of 2653 feet to the east quarter corner of Section 24.

October, 1970. McCombs Knutson Associates (Dickman Knutson, county surveyor) dug for the corner. John Tupa from Hutchinson with a backhoe. They found a stone down 3 feet below the road surface and set a McLeod County cast iron monument at the corner.

April 10, 1981. We found the monument and set a $\frac{1}{2}$ inch diameter iron pipe 100.00 feet east and a $\frac{1}{2}$ inch diameter iron pipe 100.00 feet west of the corner, all three in a straight line. Road to be regraded.

June 6, 1986. We found the cast iron monument down 1 foot below the road surface. We took new reference ties and set a railroad spike over the monument.

April 7, 1989. We found the railroad spike and the reference ties ok.

We believe the stone found by Knutson is the same stone found by the Highway Department in 1935 and that it had perpetuated the correct location of the section corner.

In 1988 we measured 2652.90 feet to the east quarter corner compared with 2653 feet in 1935 by the Highway Department.

NORTH QUARTER corner, Section 24, Township 117 North, Range 29 West

Certificate of Location of Government Corner

SKETCH OF REFERENCE TIES

(NO SCALE)

SECTION 13

power pole line

power pole line

Punch hole on top of
each end of 15 inch 41.83
CMP, 32 ft long

25.00

center line of gravel road

cast iron monument

27.90

Nail and disc
East face of power pole

SECTION 24

Statement of evidence relative to this corner location on sheet 2

I hereby certify that this document
was prepared by me or under my
direct supervision.

Willard Pellinen

Willard Pellinen
McLeod County Surveyor
License No. 9626

Date 6/16/90

OFFICE OF THE COUNTY RECORDER
MCLEOD COUNTY, MINNESOTA.

I hereby certify that this document was filed in this
office at 9 o'clock A.M. on the 7th day
of October, 1990.

Carmer Ostlie, County Recorder

By _____, Deputy

Document No. 248107

NORTH QUARTER corner, Section 24, Township 117 North, Range 29 West

Certificate of Location of Government Corner

May, 1855. A.H.Runyon of the General Land Office established this corner. He set a post in a marsh and had a reference tie to a 9 inch elm.

March 12, 1974. McCombs Knutson Associates (Dickman Knutson, county surveyor) measured the north line of Section 24 and set a temporary corner on the center line of the road in line with a power pole line running north. Mr. Walter Tupa, 55 years old and has lived in the Northwest Quarter of Section 24 since 1946, said this is the correct location of the quarter corner.

May 15, 1974. Knutson dug for the corner, John Tupa from Hutchinson with a backhoe. Found a 1 inch by 2 inch by 24 inch long wood stake down 3 feet below the road surface. They took reference ties. This wood stake was within $1\frac{1}{2}$ feet of being half way between the section corners. There was a fence line running south, $\frac{1}{4}$ mile east which was half way between the found stake and the northeast corner of Section 24 and a fence running south, $\frac{1}{4}$ mile west, which was within 2-3 feet of being half way between the found stake and the northwest corner of Section 24.

May 31, 1974. Knutson set a McLeod County cast iron monument at the corner and took reference ties.

April 7, 1989. We found the monument in good condition and the reference ties good.

We believe the wood stake found by Knutson had perpetuated the correct location of the quarter corner.

March 4, 1992. We dug and found top 12 inches of monument broken off. Dug and found the bottom of the monument tipped slightly to south. We straightened bottom of monument and it hit the one remaining tie good. Distance of northeast corner of Section 24 was good. We set a $\frac{1}{2}$ inch diameter iron pipe over the bottom of the monument and took new ties.